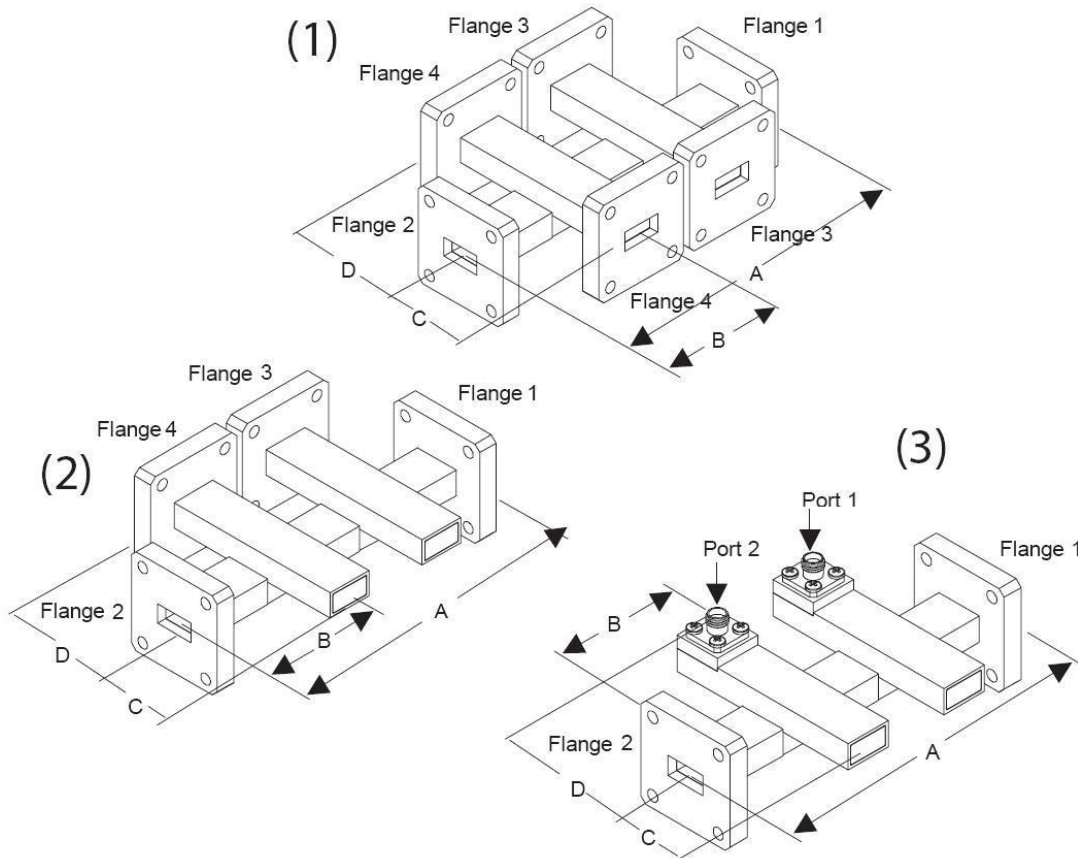
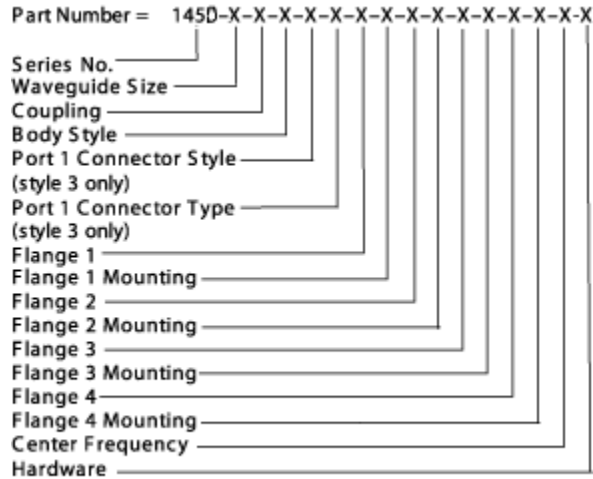


Dual Cross Guide Coupler S145D

UBS directional cross guide couplers utilize an ultra-flat coupling technique that exhibits high power handling characteristics, while maintaining optimum electrical performance parameters.



Ordering Information



Specifications

Size	Frequency (GHz)	Dimensions (inches)			
		A	B	C	D
WR28	26.50 - 40.00	3.00	1.50	3.50	0.75
WR34	22.00 - 33.00	3.00	1.50	3.50	0.75
WR42	18.00 - 26.50	3.00	1.50	3.50	0.75
WR51	15.00 - 22.00	3.00	1.50	3.50	0.75
WR62	12.40 - 18.00	3.00	1.50	3.50	0.75
WR75	10.00 - 15.00	3.00	1.50	3.80	1.00
WR90	8.20 - 12.40	3.50	1.75	3.80	1.00
WR112	7.05 - 10.00	4.00	2.00	5.20	1.25
WR137	5.85 - 8.20	6.00	2.00	2.60	1.84
WR159	4.09 - 7.05	5.00	2.50	6.00	2.25
WR187	3.95 - 5.85	5.50	2.75	6.50	2.25
WR229	3.30 - 4.90	6.00	3.00	8.00	2.50
WR284	2.60 - 3.95	7.00	3.50	10.00	3.00

Flange Configuration

FlangeType	C - Cover G - Groove CHOKE CMR CPR CPR (F,G)
Flange Mounting Holes	T1 - Through Holes T2 - Threaded A - Alternating

Electrical Specifications

VSWR	1.08 Max Primary 1.30 Max Secondary
Coupling	±1.0dB max for 10% of WG Band
Directivity	20 dB min.

Port Configuration

Connector Style	SMA, N, 2.9mm (K), 3.5mm, 2.4mm
Connector Type	M-Male, F-Female